

# Transición de una década 2010-2020

---

**Dr. Luis Miguel de Sande González. Servicio de Oncología  
Médica**

**Hospital Universitario de León**

**Sesión 7 enero de 2020**

**7.30h**

# Objetivo de la charla

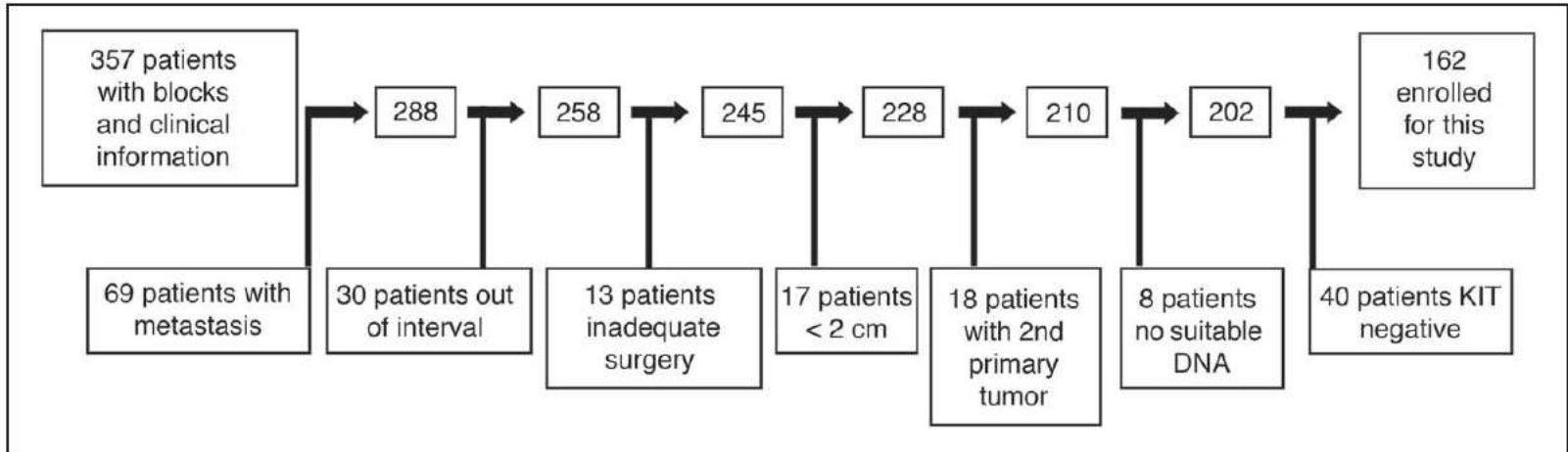
---

- 1. Presentar publicaciones más relevantes**
2. Comentar Ensayos Clínicos
3. Proyectos para la próxima década



## Deletions Affecting Codons 557-558 of the *c-KIT* Gene Indicate a Poor Prognosis in Patients With Completely Resected Gastrointestinal Stromal Tumors: A Study by the Spanish Group for Sarcoma Research (GEIS)

Javier Martín, Andrés Poveda, Antonio Llombart-Bosch, Rafael Ramos, José A. López-Guerrero, Javier García del Muro, Joan Maurel, Silvia Calabuig, Antonio Gutierrez, José L. González de Sande, Javier Martínez, Ana De Juan, Nuria Láinez, Ferrán Losa, Valentín Alija, Pilar Escudero, Antonio Casado, Pilar García, Remei Blanco, and José M. Buesa





## Prognostic time dependence of deletions affecting codons 557 and/or 558 of KIT gene for relapse-free survival (RFS) in localized GIST: a Spanish Group for Sarcoma Research (GEIS) Study

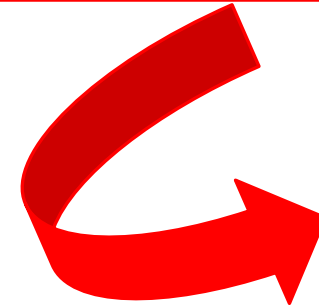
J. Martin-Broto<sup>1\*</sup>, A. Gutierrez<sup>1</sup>, X. Garcia-del-Muro<sup>2</sup>, J. A. Lopez-Guerrero<sup>3</sup>, J. Martinez-Trufero<sup>4</sup>, L. M. de Sande<sup>5</sup>, N. Lainez<sup>6</sup>, J. Maurel<sup>7</sup>, A. De Juan<sup>8</sup>, F. Losa<sup>9</sup>, R. Andres<sup>10</sup>, A. Casado<sup>11</sup>, P. G. Tejido<sup>12</sup>, R. Blanco<sup>13</sup>, J. Carles<sup>14</sup>, J. Bellmunt<sup>15</sup>, A. Gomez-España<sup>16</sup>, R. Ramos<sup>17</sup>, J. Martinez-Serra<sup>18</sup>, A. Llombart-Bosch<sup>19</sup> & A. Poveda<sup>20</sup>

<sup>1</sup>Departments of Oncology and Hematology, Medical and Translational Hemato-Oncology Group, Hospital Universitario Son Dureta, Palma de Mallorca; <sup>2</sup>Department of Oncology, Institut Català d'Oncologia, Barcelona; <sup>3</sup>Laboratory of Molecular Biology, Fundación Instituto Valenciano de Oncología, Valencia; <sup>4</sup>Department of Oncology, Hospital Miguel Servet, Zaragoza; <sup>5</sup>Department of Oncology, Complejo Hospitalario de León, León; <sup>6</sup>Department of Oncology, Hospital Virgen del Camino, Pamplona; <sup>7</sup>Department of Oncology, Hospital Clínic, Institut d'Investigacions Biomèdiques August Pi i Sunyer, Centro de Investigación Biomédica de Enfermedades Hepáticas y Digestivas, Barcelona; <sup>8</sup>Oncology Department, Hospital de Valdecilla, Santander; <sup>9</sup>Department of Oncology, Hospital General, Hospitalet de Llobregat; <sup>10</sup>Department of Oncology, Hospital Clínic Lozano Blesa, Zaragoza; <sup>11</sup>Department of Oncology, Hospital Universitario San Carlos, Madrid; <sup>12</sup>Department of Oncology, Hospital San Pedro, Logroño; <sup>13</sup>Department of Oncology, Hospital Mutua de Terrassa, Terrassa; <sup>14</sup>Department of Oncology, Hospital del Mar, Barcelona; <sup>15</sup>Department of Oncology, Hospital Vall d'Hebron, Barcelona; <sup>16</sup>Department of Oncology, Hospital Reina Sofia, Córdoba; <sup>17</sup>Department of Pathology, Hospital Universitario Son Dureta, Palma de Mallorca; <sup>18</sup>Laboratory of Molecular Biology, Hospital Universitario Son Dureta, Palma de Mallorca; <sup>19</sup>Department of Pathology, Universidad de Valencia, Valencia and <sup>20</sup>Department of Oncology, Fundación Instituto Valenciano de Oncología, Valencia, Spain

# Prognostic factors in localized GIST

- **Mitotic count** and
- **Size** are the most recognized prognostic factors in localized GIST
- Incorporating **tumor location** as an important factor
- Microscopically **free surgical margins**

➤ Prognostic factors at the **molecular level for localized GIST**



# Prognostic factors in localized GIST

---

- The selection of a final subset of
  - **162 patients** after a clinical and pathological review (paraffin blocks) of 357 cases has been explained previously



**Table 2.** Univariate analysis of prognostic factors for RFS in the entire follow-up period, the first 4-year interval and beyond the 4 years after surgery

Variable	All intervals, % (range)		Initial period (0–4 years) , % (range)		>4 years, % (range)	
	7-year RFS	<i>P</i>	RFS	<i>P</i>	RFS	<i>P</i>
Sex		0.29		0.47		0.29
Male	67 (55–78))		70 (59–80)		86 (72–100)	
Female	72 (61–82)		75 (65–84)		95 (89–100)	
Age		0.19		0.28		0.43
0–59	62 (50–75)		68 (56–80)		91 (82–100)	
≥60	73 (64–82)		75 (66–84)		91 (82–100)	
Size		<0.001		0.0002		0.029
2–5 cm	83 (75–91)		84 (77–92)		94 (86–100)	
5–10 cm	67 (51–83)		70 (54–85)		95 (87–100)	
>10 cm	41 (24–58)		49 (32–65)		71 (42–100)	
Mitosis		<0.0001		<0.0001		<0.0001
0–5	87 (80–94)		87 (80–94)		100	
6–10	74 (53–96)		74 (53–96)		100	
>10	33 (18–47)		44 (29–58)		51 (20–82)	
Fletcher/NIH		<0.0001		<0.0001		0.0006
Low	95 (89–100)		95 (89–100)		100	
Intermediate	80 (64–96)		80 (64–96)		100	
High	44 (32–57)		52 (40–64)		71 (50–92)	



**Table 2.** Univariate analysis of prognostic factors for RFS in the entire follow-up period, the first 4-year interval and beyond the 4 years after surgery

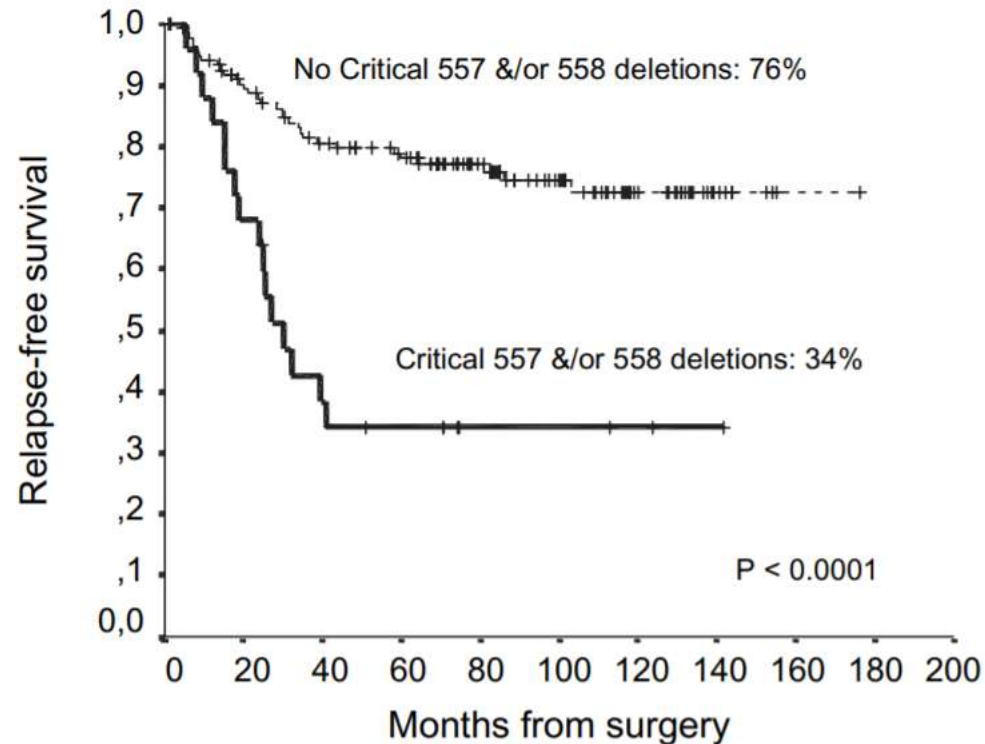
Variable	All intervals, % (range)		Initial period (0–4 years) , % (range)		>4 years, % (range)	
	7-year RFS	<i>P</i>	RFS	<i>P</i>	RFS	<i>P</i>
Localization		0.013		0.0098		0.92
Gastric	76 (67–85)		80 (72–88)		91 (82–100)	
Nongastric	58 (46–71)		61 (48–73)		91 (79–100)	
Mutational status		0.0208		0.0199		0.19
No mutation	79 (69–90)		83 (74–93)		98 (85–100)	
Any mutation	63 (52–73)		66 (56–75)		87 (76–98)	
<i>KIT</i>		0.0025		0.005		0.26
Mutated	60 (49–71)		63 (52–74)		86 (72–100)	
Wild type	79 (69–88)		82 (74–91)		95 (89–100)	
Exon 11 deletion		0.0436		0.0093		0.19
Yes	57 (41–72)		57 (42–72)		100	
No	74 (65–82)		78 (71–86)		89 (80–98)	
Del 557 and/or 558		<0.0001		<0.0001		0.37
Yes	34 (15–53)		34 (15–53)		100	
No	76 (68–83)		80 (73–87)		82 (65–99)	
Exon 11 nondeletion		0.29		0.92		0.0053
Yes	66 (50–83)		73 (58–88)		72 (47–97)	
No	70 (62–78)		72 (64–80)		97 (92–100)	

RFS, relapse-free survival; M-L/AFIP, Miettinen–Lasota/Armed Forces Institute of Pathology; F/NIH, Fletcher/National Institutes of Health.

**Table 3.** Time-dependent relapses rates (A) and multivariate analysis (B)

B	Relative risk	95% CI	<i>P</i>
Entire time period			
M-L/AFIP risk categories			
Intermediate	5.97	2.09–17.06	0.001
High	11.45	4.40–29.76	<0.001
DEL 557 and/or 558	3.05	1.59–5.85	0.001
0- to 4-year time period			
M-L/AFIP risk categories			
Intermediate	4.88	1.66–14.34	0.004
High	8.94	3.39–23.55	<0.001
DEL 557 and/or 558	3.44	1.76–6.73	<0.001

# Conclusión



Deletions involving **codons 557–558** within exon 11 of the KIT gene had an **independent prognostic** value for relapse-free survival (RFS)

# Long-term effects of continuing adjuvant tamoxifen to 10 years versus stopping at 5 years after diagnosis of oestrogen receptor-positive breast cancer: ATLAS, a randomised trial



*Christina Davies, Hongchao Pan, Jon Godwin, Richard Gray, Rodrigo Arriagada, Vinod Raina, Mirta Abraham, Victor Hugo Medeiros Alencar, Atef Badran, Xavier Bonfill, Joan Bradbury, Michael Clarke, Rory Collins, Susan R Davis, Antonella Delmestri, John F Forbes, Peiman Haddad, Ming-Feng Hou, Moshe Inbar, Hussein Khaled, Joanna Kielanowska, Wing-Hong Kwan, Beela S Mathew, Indraneel Mittra, Bettina Müller, Antonio Nicolucci, Octavio Peralta, Fany Pernas, Lubos Petruzelka, Tadeusz Pienkowski, Ramachandran Radhika, Balakrishnan Rajan, Maryna T Rubach, Sera Tort, Gerard Urrútia, Miriam Valentini, Yaochen Wang, Richard Peto, for the Adjuvant Tamoxifen: Longer Against Shorter (ATLAS) Collaborative Group\**

## Summary

**Background** For women with oestrogen receptor (ER)-positive early breast cancer, treatment with tamoxifen for 5 years substantially reduces the breast cancer mortality rate throughout the first 15 years after diagnosis. We aimed to assess the further effects of continuing tamoxifen to 10 years instead of stopping at 5 years.

*Lancet* 2013; 381: 805–16

Published Online

December 5, 2012

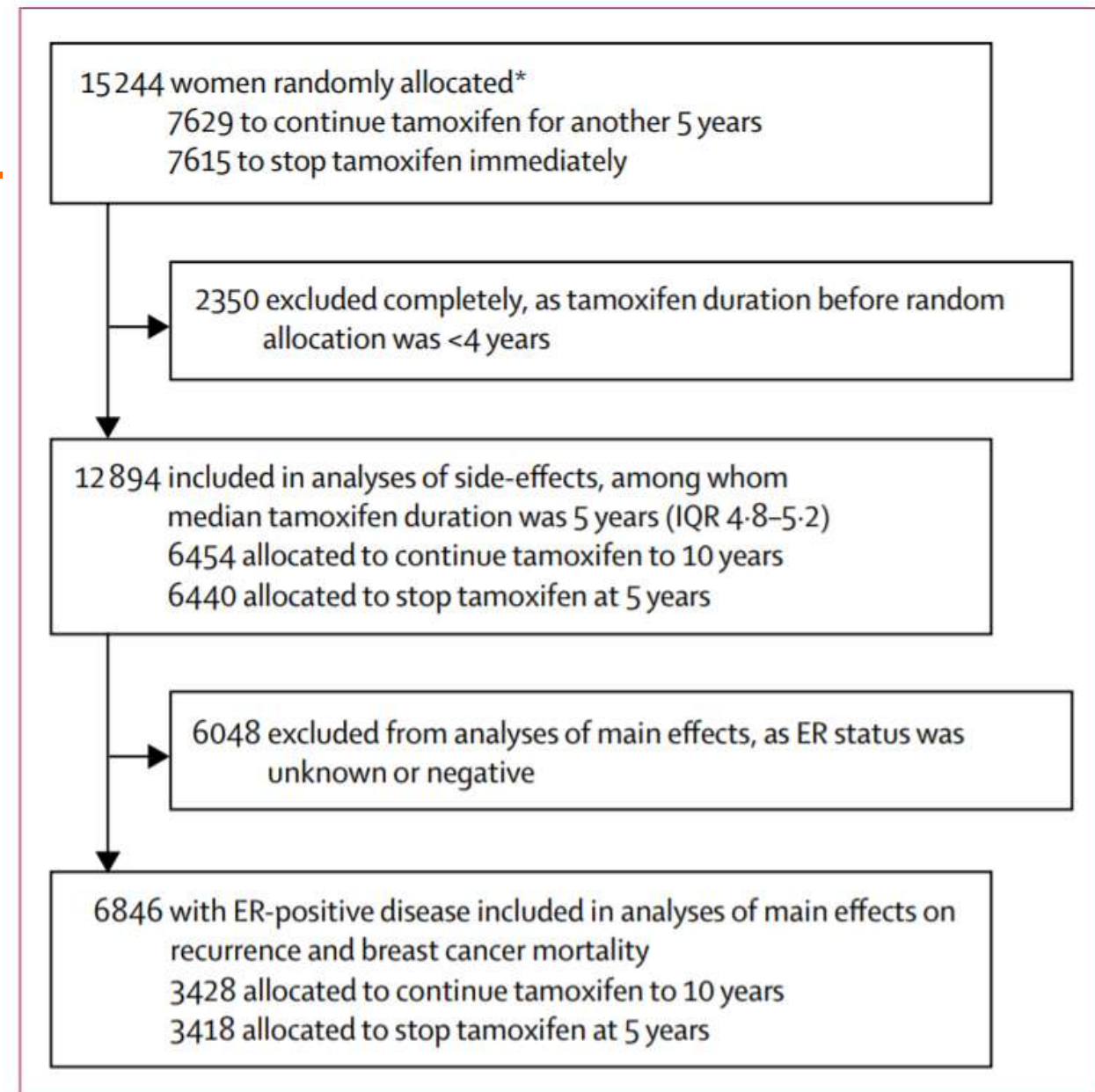
<http://dx.doi.org/10.1016/>



A Sengupta, P Shah, A Sharma, S C Sharma, K K Shenoy, H S Shukla, N K Shukla, S N Shukla, A Singh, K K Singh, A Srivastava, K Subrahmaniam, P K Sur, H B Tongaonkar, R Vashisht, K V Veerendra Kumar, S Vijaya. *Iran [Peiman Haddad]*, 247—K Dehshiri, F Amouzgar-Hashemi, H Madani, S H Mortazavi (deceased), M A Mousavizadeh, J Raafat, B Sadrolhefazi, M Tabatabaefar. *Ireland [T Finnegan]*, 1. *Israel [Moshe Inbar, previously Noa Ben-Baruch, Adi Shani]*, 253—F Barak, N Ben-Zui, R Catane, M Dinerman, E Evron, A Figer, M Gips, H Hayat, E Idelevich, R Isacson, V Kopp, F Kovner, L Marchasin, D Matcejevsky, L Olga, E Perepechi, I G Ron, T Safra, D Sarid, S Shlanger, E Shumeli, E Tepper, N Yaal-Hahoshen (deceased). *Italy [Antonio Nicolucci], (Miriam Valentini)*, 292—G Amiconi, F Ascione, S Banducci, G Baratelli, F Battistelli, R Bianchi, S Bravi, A Chiara, B Dall’Omo, A De Matteis, F Di Costanzo, L Di Lullo, B di Nardo, S Ferrari, R Fiore, G Fornari, G Gini, M Giordano, M Giovannini, A Gravina, L Isa, L Laudadio, G Luchena, G Mantovani, M Marcellini, E Mari, P Marpicati, A Martoni, E Massa, A M Molino, A Nuzzo, R Pedersini, E Piana, N L Pinna, M C Pirozzoli, F Recchia, A Riccardi, F S Robbiati, E Rossi, M Sannicoló, G Ucci, M C Valli, C Zamagni. *Japan [Yasuo Ohashi, Tadashi Ikeda, previously Yasuo Nomura], (Emi Yoshida)* 137—S Akashi, K Aogi, E Arita, H Aoyama, A Emi, J Fujisawa, K Fujiwara, T Fukutomi, R Haruta, Y Hata, T Hayashida, T Hojo, Y Hozumi, H Inoue, K Ishida, M Ishida, C Kanbayashi, D Kanke, A Kataoka, A Kato, N Kato, N Katsumata, Y Kawabuchi, H Kawaguchi, M Kitajima, S Kobayashi, M Kodaira, C Koga, S Mitsuyama, M Miyauchi, E Mori, S Murakami, K Nagao, Y Nakamura, S Nishimura, R Nishimura, M Ohba, T Onishi, S Ohno, T Osaka, S Osumi, M Sakata, M Sano, T Sato, Y Sato, H Shigematsu, H Takahashi, Y Takahashi, S Takashima, H Takenaka, K Tamae, K Tanaka, T Toge, M Toi, Y Uchida, N Uchiyama, H Yamaguchi, N Yamamoto, H Yamashita, T Yoshiyama. *Latvia [Juris Berzins]*, 92—M Bitina, I Gailite, G Keire, T Purkalne, M Ratiani, Z Zvirbule. *Lithuania [Konstantine*

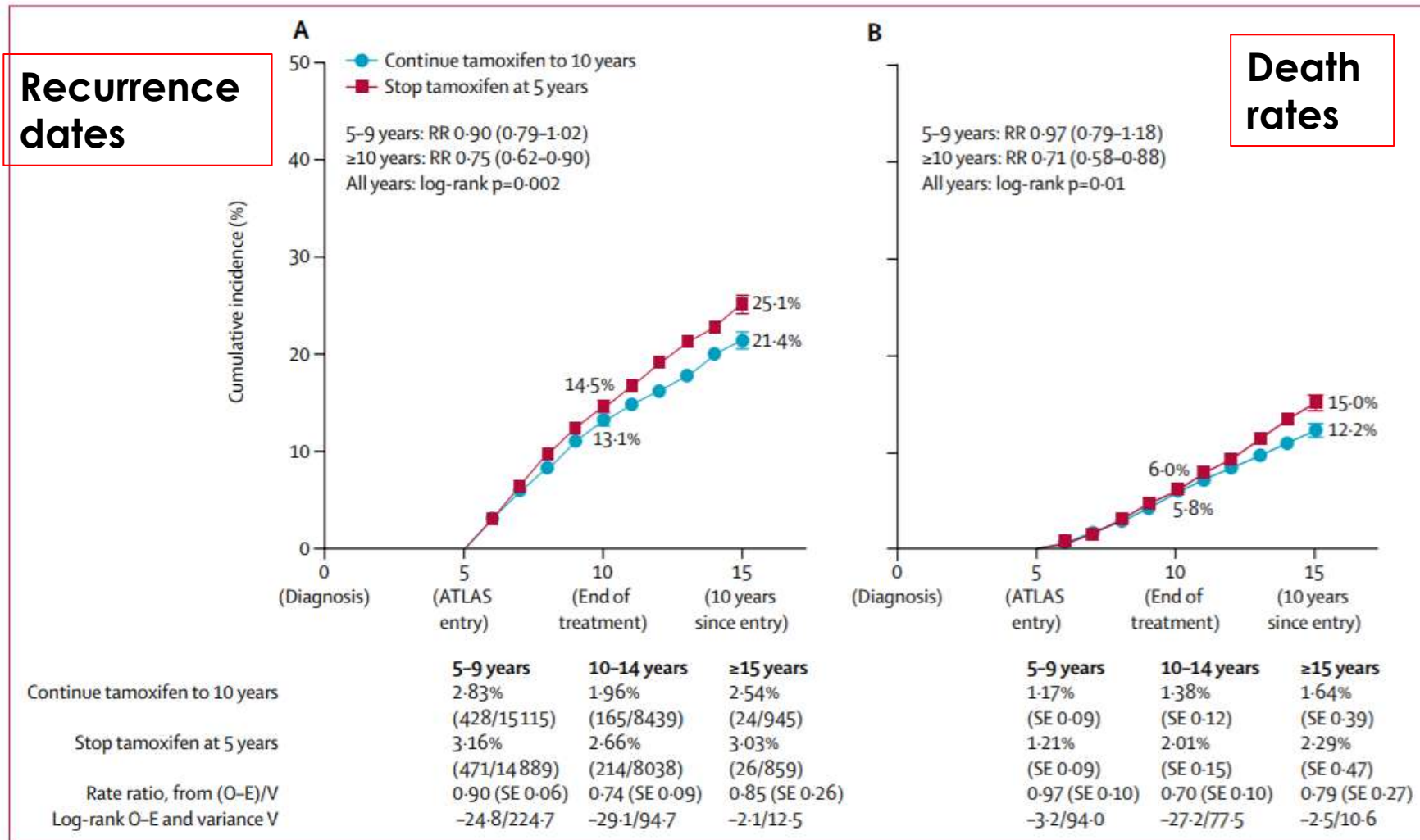
V Alija, D Almenar Cubells, C Alonso, A Alonso Amigo, G Alonso Curbera, E Alonso Redondo, I Alvarez, J Andrade Santiago, R Andrés, S Antolín Novoa, M I Antón, M A Arcusa Lanza, A Arrivi, A Avellà, J P Avellanal Barral, M A Badia i Canto, P Ballesteros Garcia, M d M Barros, R Bastús-Piulats, J N Batista López, E Batiste-Alentorn, J Belón Carrión, M Benavides, R Bernabé Caro, R Blanco Guerrero, U Bohn Sarmiento, M Boleda, C Bosch, J J Bretón Garcia, M A Burillo Cordero, J Buxó i Costa, E Calvo, L Calvo, F Capdevila, F J Carabantes, T Cardona Hernández, E Carrasco, J Casado, A Casas, S Catot Tort, J I Chacón López-Muñiz, M Chaves Conde, L Cirera i Noguera, E Ciruelos, R Colomer, J Cruz, M A De la Cruz, L De La Cruz, H De La Cueva, R Del Moral, M Domènech, F Dominguez Cunchillos, O Donay, J Dorta Delgado, A Duque Amusco, A Escobedo, P España Saz, E Espinosa Arranz, C Esteban Esteban, A Etxeberria, X Fabregat Mayol (deceased), C Falo, E Fernández Bautista, A Fernández Ortega, E Fonseca Sánchez, R M Franquesa Granell, E Gallardo, O Gallego, P Gallurt Moreira, M García, I García Carbonero, M J García López, M García Pérez, A Garrido Saldana, L Garrigós, M Gay, J R Germà Lluch, M Gil, U Giménez, A Gómez Bernal, B González, A González Del Alba, R González Del Val, L M González de Sande, R González Mancha, M M Gordon, C Gravalos Castro, I Guasch i Jordan, M Guillot, J Hornedo, L Iglesias Pérez, M D Isla, M A Izquierdo, E Jiménez Orozco, L Jolis López, I Juez, J M Laín, R Lasso de la Vega, M L Limón, M Llanos, P López, L J López Gómez, J J López López, A Lorenzo Penuel, A M Lozano Barriuso, R Llorente, H Manzano, J Martín Broto, B Martínez, P Martínez del Prado, G Martín García, C Mendiola, F Molina, C Molins, A Montano, J Montesinos, J A Moreno Nogueira, J Muñoz, M Muñoz, V Muñoz Madero, M T Murillo, M Nogué, M Noguera, B Ojeda, S Olmos, J Oramas, L Palomar, P Pastor, R Pérez Carrión, M A Pérez Escutia, J Pérez Olaguer, M d M Pérez Pérez, J Pérez-Regadera Gómez, C Pericay, J Petrement Briones, J M Piera Pibernat, A Plazaola, J Rifà, J A Rivero,

## ATLAS recruited patients from 36 countries or regions during 1996–2005.





# Recurrence (A) and breast cancer mortality (B) by treatment allocation for 6846 women with ER-positive disease



# Relevance of Reference Centers in Sarcoma Care and Quality Item Evaluation: Results from the Prospective Registry of the Spanish Group for Research in Sarcoma (GEIS)

JAVIER MARTIN-BROTO,<sup>a,b</sup> NADIA HINDI,<sup>a,b</sup> JOSEFINA CRUZ,<sup>c</sup> JAVIER MARTINEZ-TRUFERO,<sup>d</sup> CLAUDIA VALVERDE,<sup>e</sup> LUIS M. DE SANDE,<sup>f</sup> ANGELES SALA,<sup>g</sup> LORENA BELLIDO,<sup>h</sup> ANA DE JUAN,<sup>i</sup> JORDI RUBIÓ-CASADEVALL,<sup>j</sup> ROBERTO DIAZ-BEVERIDGE,<sup>k</sup> RICARDO CUBEDO,<sup>l</sup> OSCAR TENDERO,<sup>m</sup> DIEGO SALINAS,<sup>m</sup> ISIDRO GRACIA,<sup>n</sup> RAFAEL RAMOS,<sup>n</sup> SILVIA BAGUÈ,<sup>r</sup> ANTONIO GUTIERREZ,<sup>o</sup> JOSÉ DURAN-MORENO,<sup>p</sup> ANTONIO LOPEZ-POUSA<sup>s</sup>

<sup>a</sup>Biomedicine Institute of Seville (IBIS), Lab 215, CSIC, University of Seville, Seville, Spain; <sup>b</sup>Medical Oncology Department, Virgen del Rocio University Hospital, Seville, Spain; <sup>c</sup>Medical Oncology Department, Hospital Universitario de Canarias, Tenerife, Spain; <sup>d</sup>Medical Oncology Department, Hospital Universitario Miguel Servet, Zaragoza, Spain; <sup>e</sup>Medical Oncology Department, Vall d'Hebron University Hospital, Barcelona, Spain; <sup>f</sup>Medical Oncology Department, Hospital de León, León, Spain; <sup>g</sup>Medical Oncology Department, Hospital de Basurto, Bilbao, Spain; <sup>h</sup>Medical Oncology Department, Hospital Universitario de Salamanca, Salamanca, Spain; <sup>i</sup>Medical Oncology Department, Hospitalario Universitario Marqués de Valdecilla, Santander, Spain; <sup>j</sup>Medical Oncology Department, Hospital Josep Trueta, Instituto Catalán de Oncología, Girona, Spain; <sup>k</sup>Medical Oncology Department, Hospital Universitario La Fe, Valencia, Spain; <sup>l</sup>Medical Oncology Department, Hospital Universitario Puerta de Hierro, Madrid, Spain; Departments of <sup>m</sup>Orthopedic Surgery, <sup>n</sup>Pathology, <sup>o</sup>Hematology, and <sup>p</sup>Medical Oncology, Hospital Universitario Son Espases, Palma de Mallorca, Spain; Departments of <sup>q</sup>Orthopedic Surgery, <sup>r</sup>Pathology, and <sup>s</sup>Medical Oncology, Hospital Universitari Sant Pau, Barcelona, Spain

*Disclosures of potential conflicts of interest may be found at the end of this article.*





## ABSTRACT

**Background.** Reference centers (RCs) are a key point for improving the survival of patients with soft-tissue sarcomas (STS). The aim of this study was to evaluate selected items in the management of patients with STS, comparing results between RC and local hospitals (LHs).

**Materials and Methods.** Diagnostic and therapeutic data from patients diagnosed between January 2004 and December 2011 were collected. Correlation with outcome was performed.

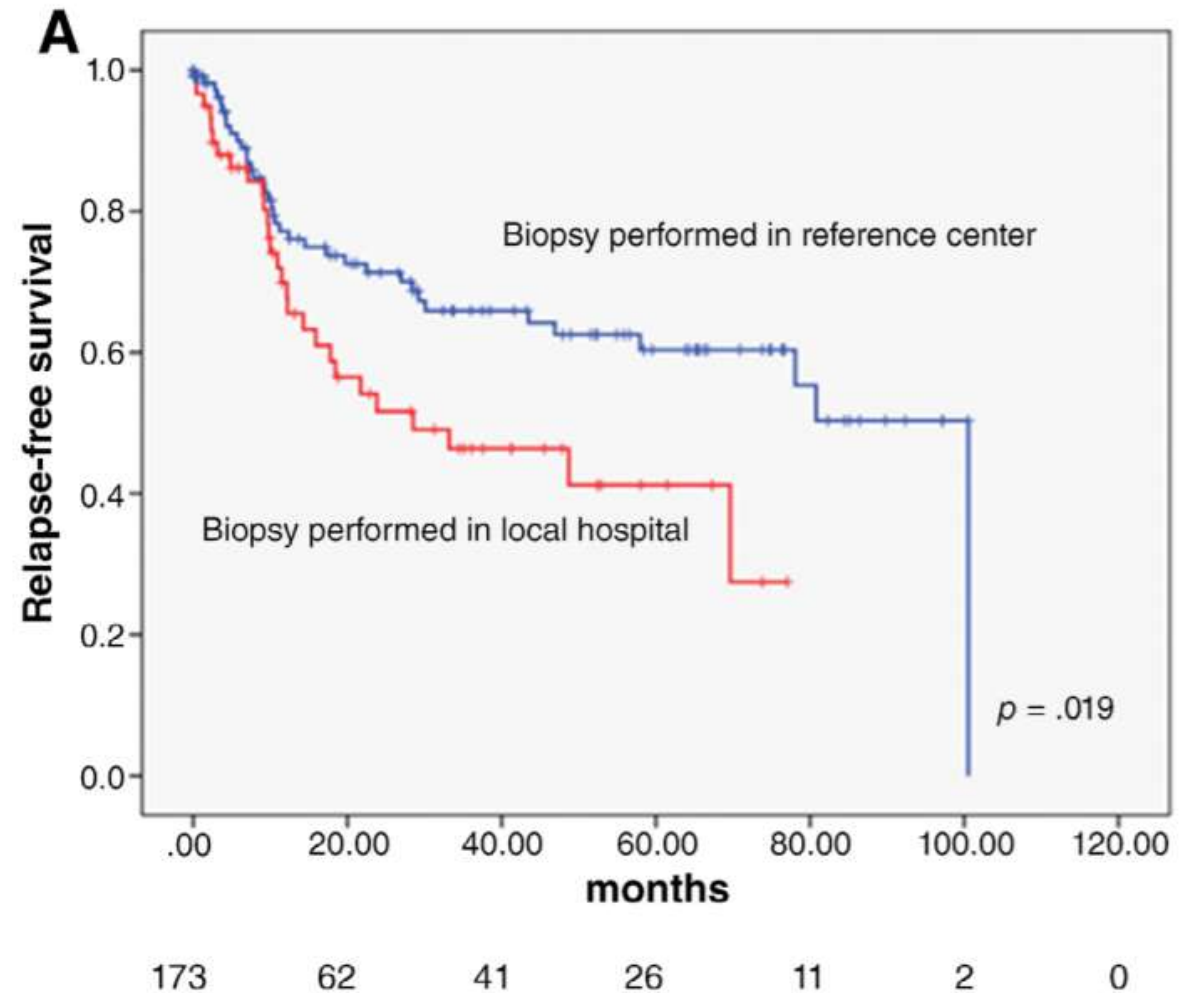
**Results.** A total of 622 sarcomas were analyzed, with a median follow-up of 40 months. Imaging of primary tumor preoperatively (yes vs. no) correlated with a higher probability of free surgical margins (77.4% versus 53.7%;  $p = .006$ ). The provenance of the biopsy (RC vs. LH) significantly affected relapse-free survival (RFS; 3-year RFS 66% vs. 46%, respectively;  $p = .019$ ). Likewise, 3-year RFS was significantly worse in cases with infiltrated (55.6%) or

unknown (43.4%) microscopic surgical margins compared with free margins (63.6%;  $p < .001$ ). Patients managed by RCs had a better 3-year overall survival compared with those managed by LHs (82% vs. 70.4%, respectively;  $p = .003$ ). Perioperative chemotherapy in high-risk STS, more frequently administered in RCs than in LHs, resulted in significantly better 3-year RFS (66% vs. 44%;  $p = .011$ ). In addition, patients with stage IV disease treated in RCs survived significantly longer compared with those in LHs (30.4 months vs. 18.5 months;  $p = .036$ ).

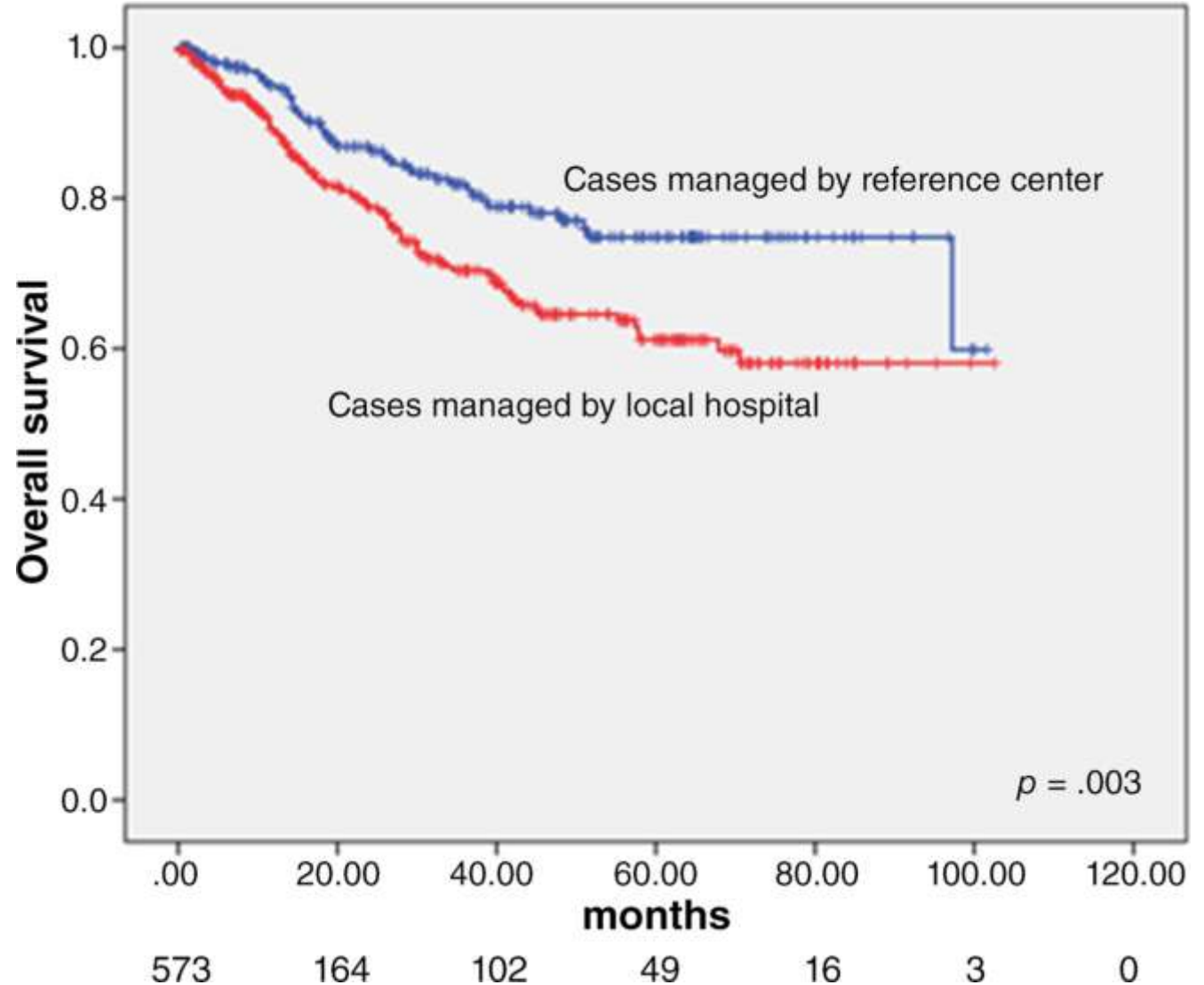
**Conclusion.** Our series indicate that selected quality-of-care items were accomplished better by RCs over LHs, all with significant prognostic value in patients with STS. Early referral to an RC should be mandatory if the aim is to improve the survival of patients with STS. *The Oncologist* 2019;24:e338–e346

**Implications for Practice:** This prospective study in patients diagnosed with soft-tissue sarcoma shows the prognostic impact of reference centers in the management of these patients. The magnitude of this impact encompasses all steps of the process, from the initial management (performing diagnostic biopsy) to the advanced disease setting. This is the first prospective evidence showing improvement in outcomes of patients with metastatic disease when they are managed in centers with expertise. This study provides extra data supporting referral of patients with sarcoma to reference centers.

# Kaplan-Meier curves for relapse-free survival (RFS) that compare biopsy provenance (reference centers vs. local hospitals) in cases registered by Hospital Son Espases.



# Kaplan-Meier curves for overall survival in relation to center type (reference center vs. local hospital)



# Objetivo de la charla

---

1. Presentar publicaciones más relevantes
- 2. Comentar Estudios y Ensayos Clínicos**
3. Proyectos para la próxima década



# European, non-interventional, phase IV NIMES-ROC trial of trabectedin plus pegylated liposomal doxorubicin in patients with platinum-sensitive recurrent ovarian cancer: an interim analysis

<sup>1</sup>Luis Miguel de Sande\*, <sup>2</sup>Giovanni Scambia, <sup>3</sup>Alessandro Villanucci, <sup>4</sup>Emanuele Naglieri, <sup>5</sup>Mikel Arruti Ibarbia, <sup>6</sup>Federica Brusa, <sup>7</sup>Hugues Bourgeois, <sup>8</sup>Roberto Sorio, <sup>9</sup>Antonio Casado, <sup>10</sup>Dietmar Reichert, <sup>11</sup>Catherine Dopchie, <sup>12</sup>Sandro Pignata

<sup>1</sup>Hospital de León, León, Spain; <sup>2</sup>Policlinico Universitario Agostino Gemelli, Università Cattolica Di Roma, Roma, Italy; <sup>3</sup>Azienda Ospedaliero-Universitaria Careggi, Firenze, Italy; <sup>4</sup>Istituto Oncologico Giovanni Paolo II, Bari, Italy; <sup>5</sup>Hospital de Galdakao, Galdakao, Spain; <sup>6</sup>Ospedale Cardinal Massaia, Asti-Piemonte, Italy; <sup>7</sup>Centre Jean Bernard-Clinique Victor Hugo, Le Mans, France; <sup>8</sup>Centro di Riferimento Oncologico di Aviano– I.R.C.C.S, Aviano, Italy; <sup>9</sup>Hospital Universitario Clínico San Carlos; <sup>10</sup>Onkologie Westerstede, Medizinische Studiengesellschaft NORD-WEST GmbH, Westerstede, Germany; <sup>11</sup>CHWapi site IMC, Centre hospitalier Wallonie Picarde, Tournai, Belgium; <sup>12</sup>Istituto Nazionale Tumori Pascale – I.R.C.C.S. – Fondazione Pascale, Napoli, Italy

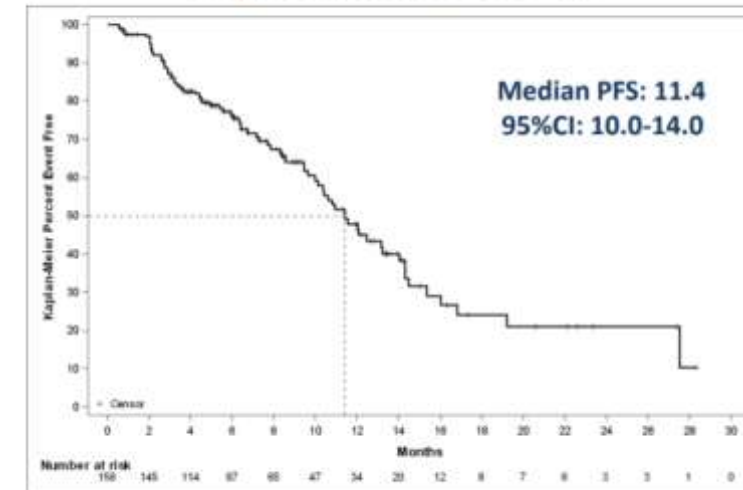


BEST RESPONSE, n (%)	Total (n=158)
*Data not available at cut-off date	
Complete response (CR)	15 (9.5)
Partial response (PR)	45 (28.5)
Stable disease (SD)	45 (28.5)
Progressive disease (PD)	32 (20.3)
Not evaluable / Missing *	21 (13.3)
Objective response rate (ORR; CR+PR); [95% Confidence interval]	60 (38.0) [30.4-46.0]
Disease control rate (DCR; ORR+SD) [95% Confidence interval]	105 (66.5) [58.5-73.8]

SAFETY, n (%)	Total (n=158)
Most frequent trabectedin related grade 3/5 ADRs	
Neutropenia	33 (20.9)
Febrile neutropenia	2 (1.3)
Asthenia	7 (4.4)
Anemia	5 (3.2)
Thrombocytopenia	5 (3.2)
Vomiting	3 (1.9)

- ADRs related to trabectedin and PLD were reported in 108 (68.4%) and 104 (65.8%) patients, respectively.
- The safety profile between subgroups was not different from that of the overall population.
- No grade 5 or unexpected treatment related ADRs occurred.

## Progression-free survival



# Estudio ANITA

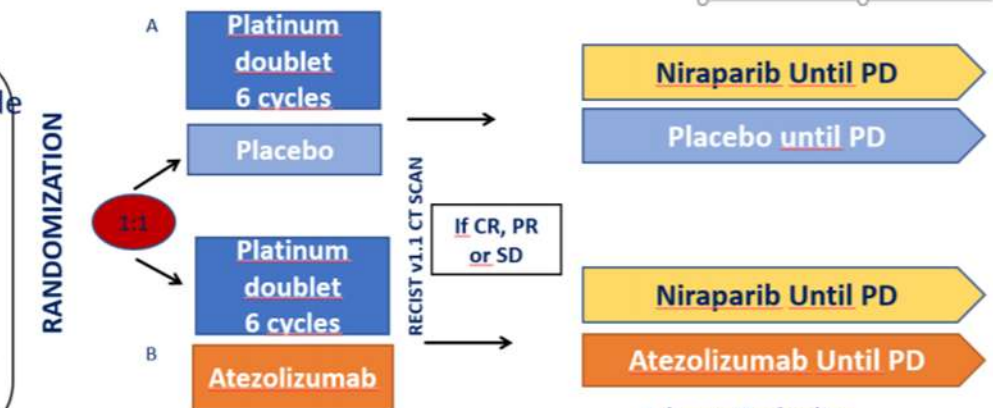
- ➔ ENGOT-Ov41 / GEICO 69-O / ANITA (Atezolizumab and Niraparib Treatment Association in recurrent ovarian cancer and platinum as an option)

## DISEÑO DEL ESTUDIO (previo a la enmienda en proceso de aprobación)

N= 414 patients

- Recurrent high-grade serous or endometrioid, or undifferentiated
- TFIp >6 months
- ≤ 2 prior lines
- Measurable disease
- ECOG ≤ 1

PI: A. González



### Stratification factors:

- Platinum based regimen selected
- PFI (6-12 months vs > 12 months)
- BRCA mutation status (mutated vs. non-mutated)
- PD-L1 positive/negative-unknown

### Primary Endpoint:

- PFS by RECIST v.1.1

### Secondary endpoints:

- Safety and tolerability
- TFST, TSST, PFS2, OS
- ORR, DOR
- QoL/PRO

# Estudio BoRNEO



- **Incidence of Somatic and Germline BRCA Mutations in a Spanish Large Clinic-Based Cohort of Patients with non-Mucinous Epithelial Ovarian Cancer with Cross-Laboratory Validation of Somatic Technique (BoRNEO) – A GEICO Study**

# Estudio GEIS 51

---

- ▶ **PALBOSARC: Ensayo fase II multicéntrico de palbociclib en segunda línea de sarcomas avanzados con sobreexpresión CDK4.**

# Estudio GEIS 26

---

- **Registro de sarcomas raros:** Herramienta de ayuda para evaluar el número de casos de cada subtipo y su orientación terapéutica por el Grupo Español de Investigación en Sarcomas (GEIS).

# Estudio GEIS 42

---

- ▶ **SSGXXII: Three versus five years of adjuvant imatinib as treatment of patients with operable GIST with a high risk for recurrence: A randomised Ph III study**



# Objetivo de la charla

---

1. Presentar publicaciones más relevantes
2. Comentar Ensayos Clínicos
3. **Proyectos para la próxima década**

# Publicaciones 2020

---

## **REAL-WORLD EVIDENCE OF TRABECTEDIN IN PATIENTS WITH ADVANCED SOFT-TISSUE SARCOMA**

### Authors:

Luis Miguel de Sande González et al.

### Affiliations

Hospital Universitario de León, Spain

# Estudio ENGOT-cx11



- ▶ A Randomized, Phase 3, Double-Blind Study of Chemoradiotherapy With or Without **Pembrolizumab** for the Treatment of High-risk, **Locally Advanced Cervical** Cancer (KEYNOTE-A18 / ENGOT-cx11)

## ENGOT-OV42 / NSGO-AVATAR

**n=423**  
Randomization: 1:1:1

**Relapsed Ovarian Cancer**  
where platinum combination is an option

Stratification factors

- PD-L1 expression
- HRd / HRp
- Previous use of bevacizumab (yes/no)
- Previous use of PARP inhibitor (yes/no)
- According to standard of care choice

**ARM C**  
Niraparib  
+  
Bevacizumab  
+  
Dostarlimab

n=141

**ARM B**  
Niraparib  
+  
Bevacizumab

n=141

**ARM A**  
Platinum doublet  
or  
Platinum doublet with  
concomitant & maintenance  
bevacizumab

n=141

Mirza MR et al.

- Antecedent of cancer and mortality after the first ST segment elevation acute myocardial infarction treated with primary coronary angioplasty. A prospective cohort study. **Irene Sillero et al. *Annals of Oncology* (2019) 30 (suppl\_5): v760-v796.**
- Relationship between androgen receptor and tumor infiltrating lymphocytes in triple negative breast cancer. L.F. **Sánchez-Cousido et al. *Annals of Oncology* (2018) 29 (suppl\_8): viii58-viii86.**
- Final results of RENO study: randomized phase II of oral vinorelbine or etoposide with cisplatin & chemo-radiation in stage III NSCLC. SLCG 10/02 M. Provencio Pulla. **Diz Taín. *Annals of Oncology* (2018) 29 (suppl\_8): viii488-viii492**
- Prospective Observational Study of Pazopanib in Patients with Advanced Renal Cell Carcinoma (PRINCIPAL Study). **Ángel Rodríguez. *Oncologist*. 2019 Apr;24(4):491-497**
- Efficacy and safety of abiraterone acetate plus prednisone vs. cabazitaxel as a subsequent treatment after first-line docetaxel in metastatic castration-resistant prostate cancer: results from a prospective observational study (CAPRO). **Ángel Rodríguez. *BMC Cancer* (2019) 19:76**
- Prognostic role of **HMG proteins** in a series of 301 advanced soft tissue sarcoma patients: A Spanish Group for Sarcoma Research Study (GEIS). LM de Sande. CTOS 2019 Annual Meeting. November 13-16. Tokyo, Japan